

CONSTRUCTION OF A NEW 60 BED CARE FACILITY & DAY CENTRE AT BURR HILL CHASE PROJECT UPDATE 7: 3RD DECEMBER 2020

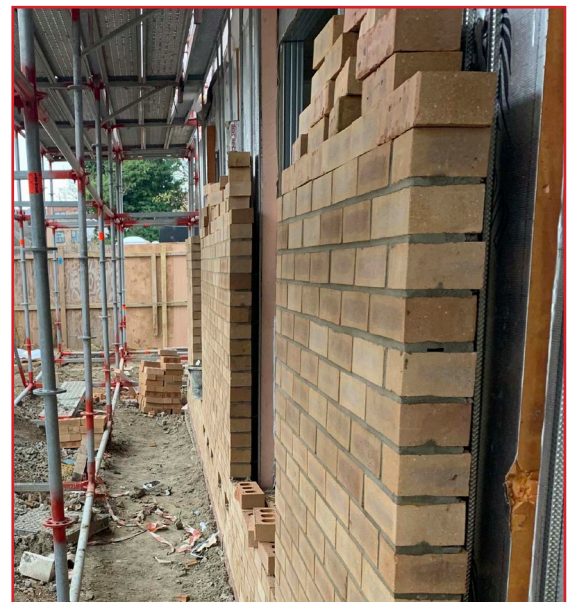
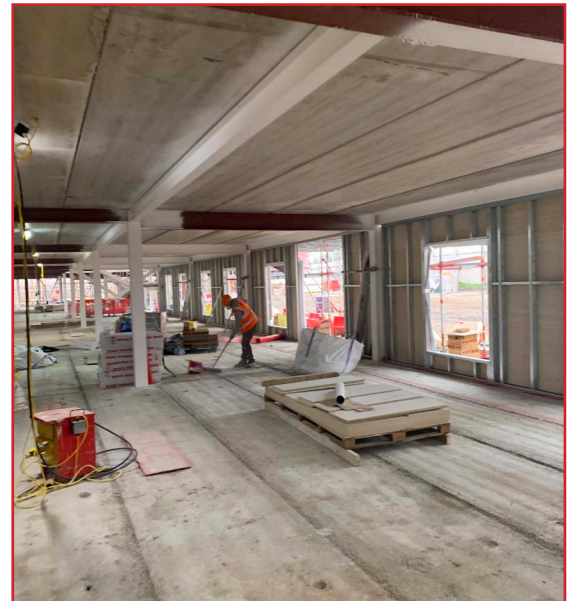
Dear Neighbours

We are pleased to report that we are making good progress in the development of our new care facility.

The former Seabrook College on Burr Hill Chase is currently being developed for Southend Borough Council to provide a new 60 bed care facility and a day centre for adults with learning disabilities. The new two storey building will provide 60 bedrooms and the day centre as well as incorporating a community-based rehabilitation service and an employment service for adults with a learning disability.

The build will also include resident lounges, catering facilities, medical stations and recreational areas.

This is our sixth update for the project; please refer to the website at the address below for progress photos, copies of newsletters, and contact details for our site team:



KEY LOGISTICS INFORMATION

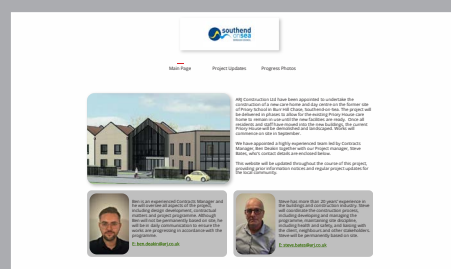
The main site entrance is located on Burr Hill Chase. All deliveries and waste disposal will be via this entrance point. Normal site hours are 8am to 6pm (Monday to Friday) and 8am - 1pm (Saturday).

We will aim to cause the minimum of noise and disruption to our surrounding neighbours by careful planning of the works. Site deliveries will be organised at suitable times to avoid unnecessary congestion. Any abnormally large vehicle movements or potential disruption will be notified to our neighbours in advance, by issuing regular newsletters (both hard copy and via the website: www.arj-prioryhouse.site).

Website:

The site-specific website, is now fully operational and contains all newsletters/updates, as well as the contact details for our site team.

www.arj-prioryhouse.site



CONSTRUCTION OF A NEW 60 BED CARE FACILITY & DAY CENTRE AT BURR HILL CHASE PROJECT UPDATE 7: 3RD DECEMBER 2020

COMPLETED WORKS (LAST 4 WEEKS)

- The concrete floor planks have been installed to all areas
- Masonry works have commenced on phase 1
- Roof trusses have been installed to phase 2
- The installation of roof felt and counter battens on phase 2 is on-going
- Intumescent priming of steelwork is on-going

PLANNED WORKS (NEXT 4 WEEKS)

- Scaffolding installation is on-going around the building
- The installation of the SFS external walls is being undertaken in all areas
- Screeding of the flat roof areas will begin
- Continue intumescent priming to steelwork



ARJ COVID-19 MEASURES

- All sites are currently working to specific safeguarding measures, which include:
- Enforcement of social distancing when undertaking tasks, by a minimum of two metres. Activities are being selected to specifically comply with this directive, ahead of perceived efficiency.
- Any company restrictions relating to use of private transport, car allowances and expenses has been relaxed, to ensure that operatives can safely travel to and from site whilst socially distancing.
- Site rules relating to welfare breaks (e.g. eating lunch etc) have been relaxed, to enable operatives to maintain a safe distance from each other during these periods.
- Toolbox talks are highlighting hygiene and social distancing measures on site. Hand wash facilities and anti-bacterial hand gel availability has been increased and signage stressing the importance of cleanliness are displayed around the site.
- Operatives displaying any symptoms associated with COVID-19 are asked to leave site and self-isolate in line with official guidance.
- Appropriate site cleaning regimes are in place.

Should you have any queries, please don't hesitate to contact:

Steve Bates, Project Manager on **07543 846179**